

# REXTON - WHAT'S NEW

## NEW REXTON REACH PLATFORM

Reach delivers Multi-Voice Focus technology which allows your members to hear multiple people, even in a noisy environment. Multi-Voice Focus technology has been under development for more than a decade.

1. Detects and tracks **multiple voices** in 180° – **1,000 times per second**
2. Activates new types of beams that **locate speakers and follow them** as they move
3. Separates **target speech from background noise**

## KEY FEATURES

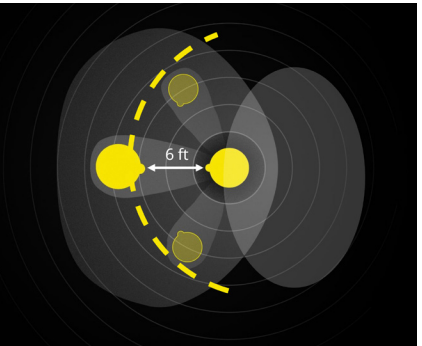
### VOICE STABILIZER

The latest Voice Stabilizer controls the compression to ensure all voices within the focus beam are amplified in the best linear ways when the sound gets too loud. It allows for more aggressive compression of the noise and more linear processing of speech to ensure a strong contrast between speech and noise. Benefit: voices remain untouched while surrounding noise is managed.

### CONNECTIVITY

Rexton Reach provides seamless connectivity with compatible iOS and Android ASHA phones. With Rexton accessories, members can also connect to their TV and other audio devices.

## MULTI-VOICE FOCUS TECHNOLOGY

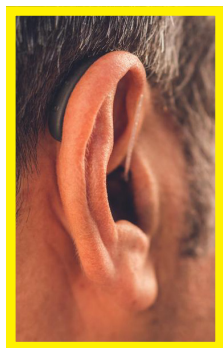


### SOUNDPRO 3.0

SoundPro 3.0 automatically steers all sound processing features, including the new Multi-Voice Focus inputs, based on the analysis of the acoustic scene. When changing the strategy to Natural Focus or Speech Focus, the recommended balance of features is modified. Balanced Focus is recommended for enhanced automatic performance.

### LIFEPROOF™

Rexton hearing aids are IP68 rated. They are built using robust components and are tested extensively to ensure they can endure harsh environments and you can rely on them in everyday challenges.



## AVAILABLE COLORS

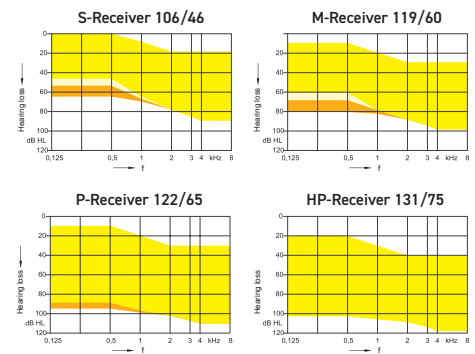


Black

Rose Gold

Dark Champagne

Sandy Brown



## MEMBER BENEFITS

- Ideal for both first time and experienced users with mild to severe hearing loss
- Discreet design with new housing update
- Rechargeable for full day use up to 39 hours (or 34 hours with 5 hours of streaming)
- 4-hour standard charge time or 30-min fast charge
- Travel Charger provides 3 charges on the go
- Live remote fitting sessions via Connexx for member convenience and satisfaction
- NEW easier-to-use Rocker Switch
- Direct audio streaming from compatible Apple® and Android™ devices
- Compatible with Rexton App and Rexton Assist
- Water resistant, IP68 and ATEX certified
- Equipped with telecoil
- Available in 4 colors



# REACH R-LI T

Performance Level	80
Battery	Lithium-ion battery
Charge Time	4 Hours
Wearing Time	up to 39 hours (no streaming) up to 34 hours (w/5 hours streaming)
FOG in dB	46/60/65/75
Accessories	Travel Charger Charging+ Station Smart Transmitter 2.4 Smart Mic
App	Rexton App
EarWear 3.0	Domes & Sleeves

Features	Soundpro 3.0 Multi-Voice Focus Four focus streams Voice Stabilizer Multi Track Processing Speech Preservation Technology My Voice 2.0 AutoEcho Reducer Motion Sensor Direct Streaming BT LE Audio Ready Made for iPhone Android ASHA (11 or higher) Handsfree (iPhone 11 or higher) Call/Tap Control (iPhone 11 or higher) AutoVolume	Directionality Noise Management Wind Noise Reduction Bandwidth Extension Bandwidth Compression Feedback Preventer Music Enhancer (3 programs) Automatic Acclimatization T-Coil XPhone IP 68 Rated ATEX Certified Rexton Assist Mask/Speech Boost Directional Hearing Remote Services
----------	--	---

# CHARGERS & ACCESSORIES



1555205  
**Connexx Travel Charger**  
Included  
Provides 3 full charges without plugging in



1531504  
**Connexx Charging+ Station**  
Optional  
Charges, dries and UV sanitizes



1230845  
**Smart Transmitter 2.4**  
Allows for direct streaming stereo sound from your TV.



1230854  
**Smart Mic**  
Remote microphone that allows for streaming from almost any Bluetooth-enabled phone. May also be used as a remote control.

Scan to learn more about the NEW Rexton Reach



RELY ON  
**LIFEPROOF**  
REXTON

