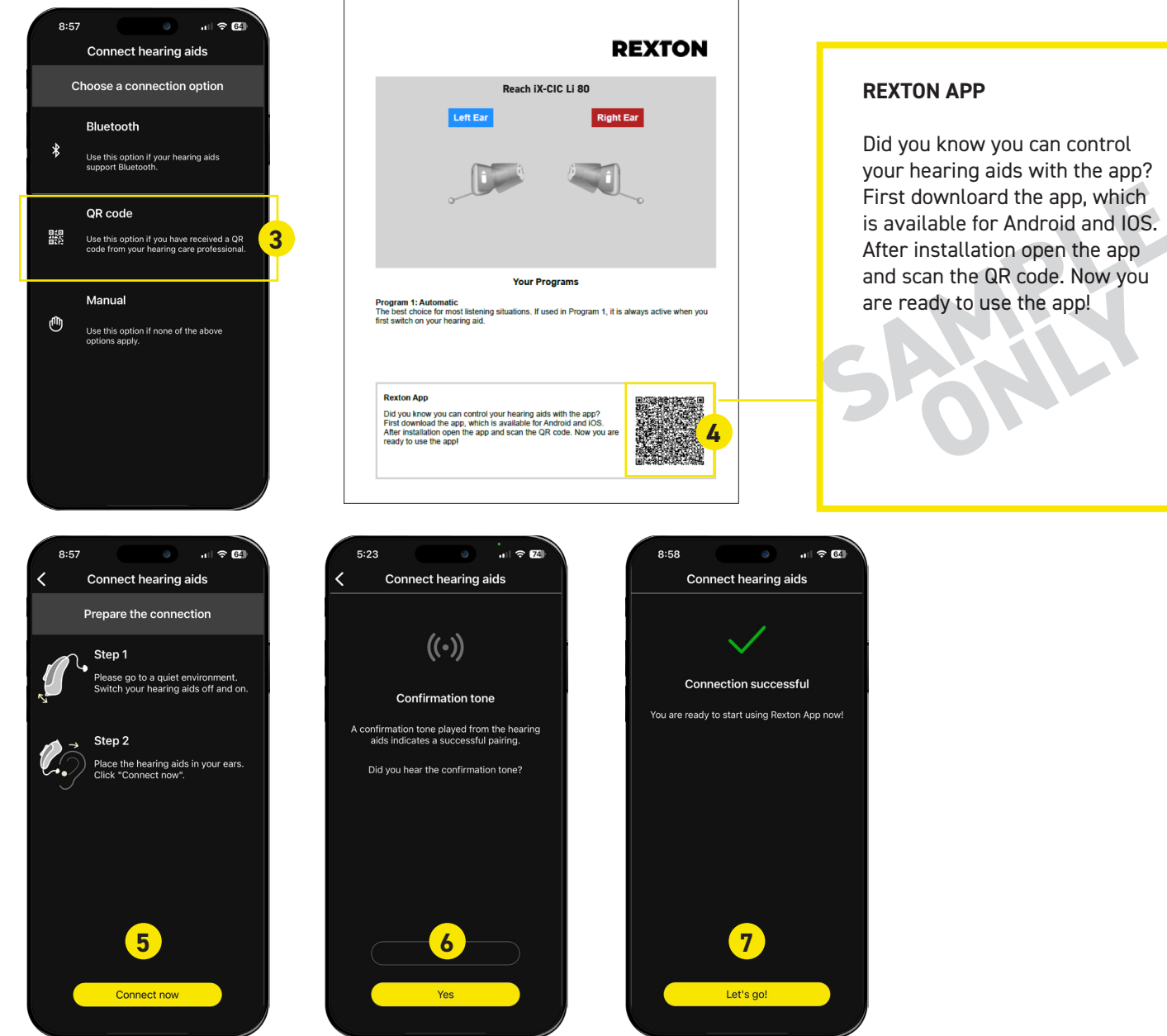


PAIRING YOUR HEARING AIDS TO YOUR SMARTPHONE FOR REXTON APP

Preferred Method – requires QR Code from your fitting

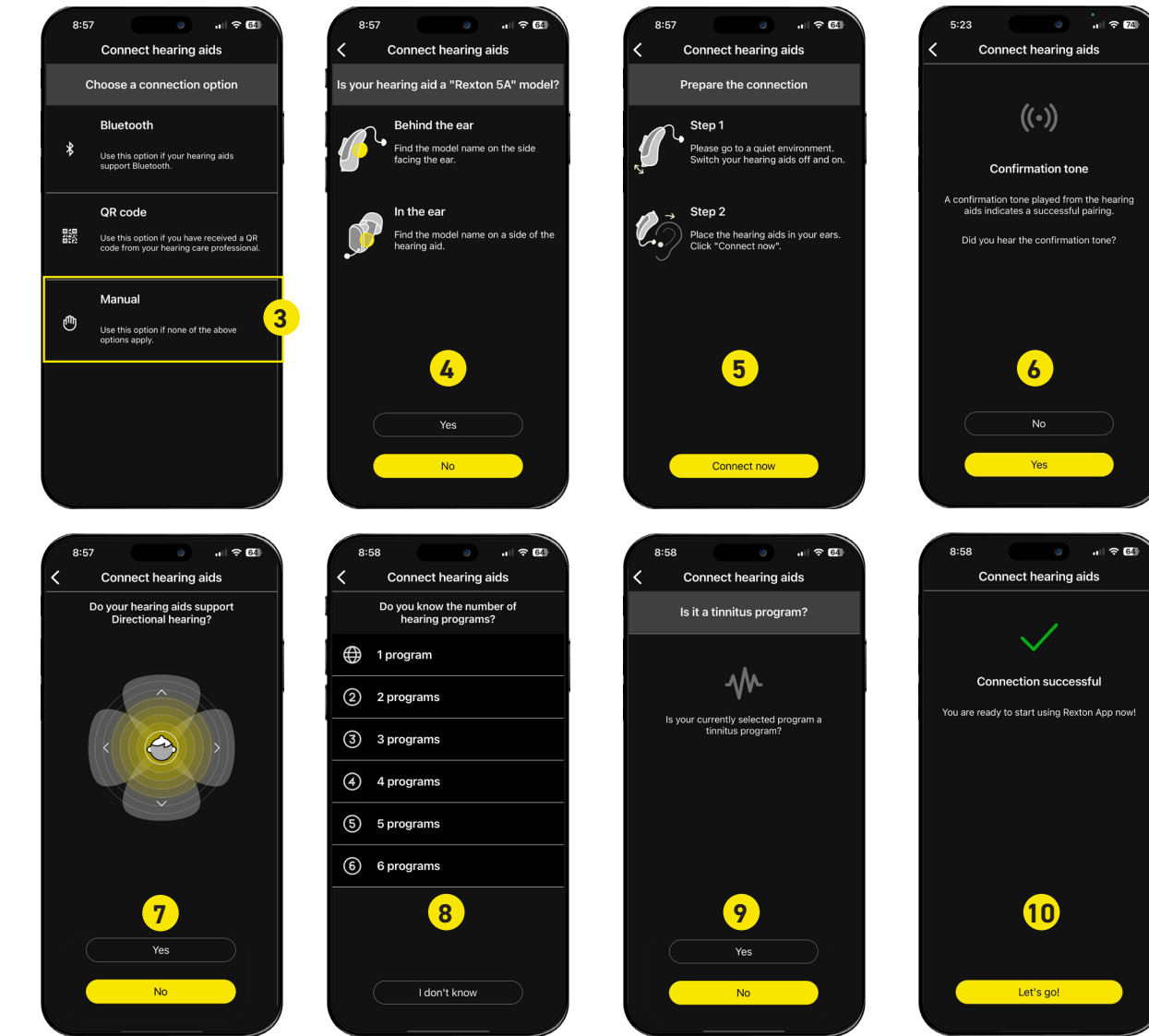
1. Turn hearing aids off by placing them in the charger.
2. Open Rexton app in smartphone.
3. Select **QR Code** connection option.
4. Scan QR code from fitting report provided at your fitting.
5. Remove hearing aids from charger, insert into both ears and wait until they power on. Select **Connect now**.
6. A confirmation tone will be played in each hearing aid. Select **Yes** if heard. Select **No** if not.
7. Select **Let's go!** to start using Rexton app.



PAIRING YOUR HEARING AIDS TO YOUR SMARTPHONE FOR REXTON APP

Alternate method if QR code unavailable

1. Turn hearing aids off by placing them in the charger.
2. Open Rexton app in smartphone.
3. Select **Manual** connection option.
4. Select **No** when asked Is your hearing aid a "Rexton 5A" model?
5. Remove hearing aids from charger, insert into both ears and wait until they power on. Select **Connect now**.
6. A confirmation tone is played in each hearing aid. Select **Yes** if heard. Select **No** if not.
7. Select **No** for Directional hearing.
8. Select Number of programs your hearing professional gave you.
9. Select **No** for tinnitus program.
10. Select **Let's go!** to start using Rexton app.



CONTROLLING YOUR HEARING AIDS

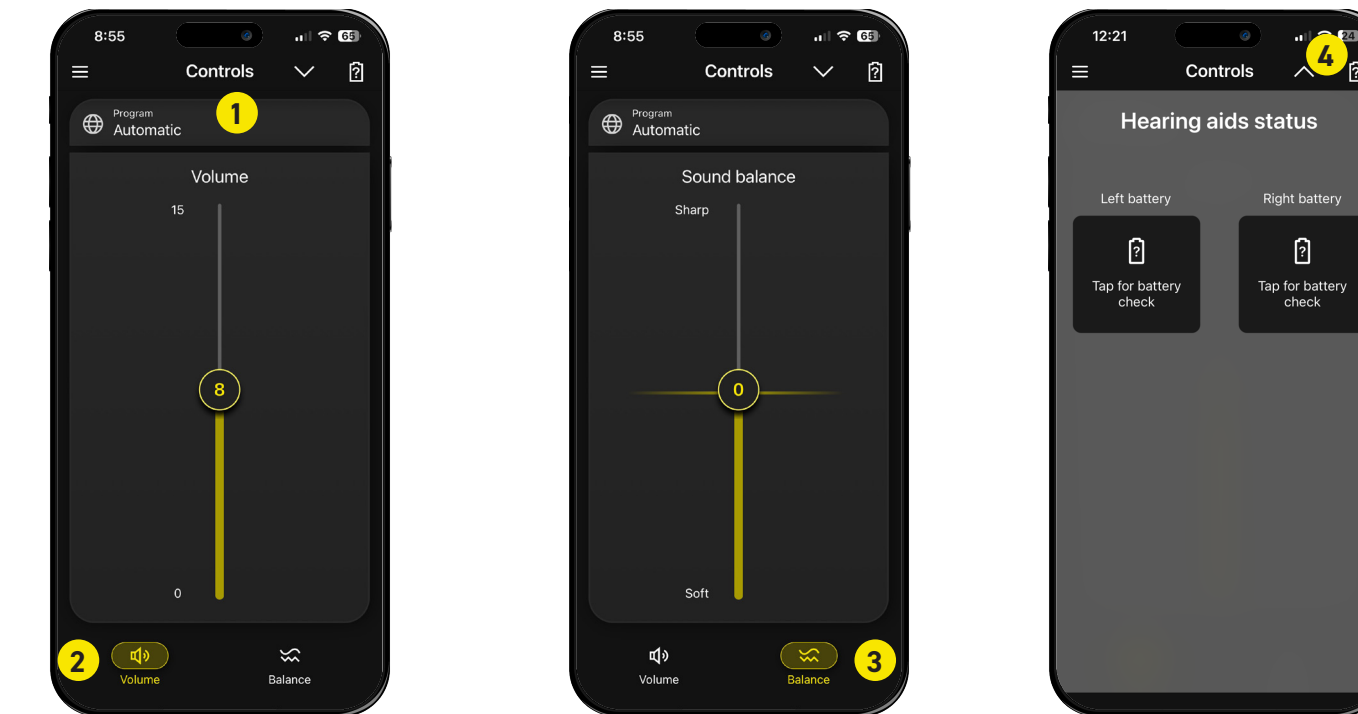
Download the Rexton app to your iPhone® or ANDROID™ smartphone

1. Scan this code or go to your app store and type Rexton in the search bar
2. Tap Get (or cloud icon) to Install
3. Follow the pairing instruction in the next panel



Rexton App Controls

1. Program change
2. Volume change
3. Sound Balance (Treble/Bass)
4. Battery Status



REACH INOX-CIC LI

QUICK START GUIDE & APP OVERVIEW



This is not a substitution for reading your Owner's Manual. Please refer to it for more in-depth instruction.

Other trademarks and tradenames are those of their respective owners. Apple, the Apple logo and iPhone are trademarks of Apple Inc., registered in the U.S. and other countries. App Store is a service mark of Apple Inc. Android, Google Play and the Google Play logo are trademarks of Google Inc.
Copyright ©2024 Rexton is a registered trademark of WSAUD A/S. Document No D21041210 PN 21041210 SIV-18264-23

Distributor
WS Audiology USA, Inc.
101 Wood Ave South, 7th floor
Iselin, NJ 08830

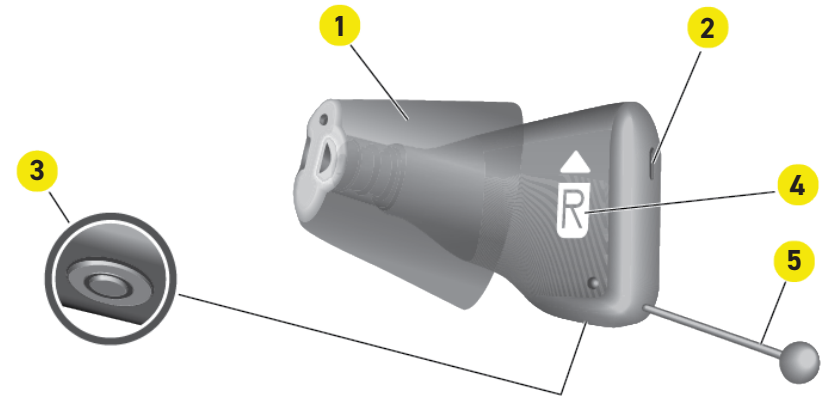
REXTON

GETTING
THE JOB DONE
SINCE 1955

REXTON

YOUR HEARING AIDS

- 1 Ear Tip
- 2 Microphone opening
- 3 Charging contacts
- 4 Side indicator (R = right ear, L = left ear)
- 5 Removal cord

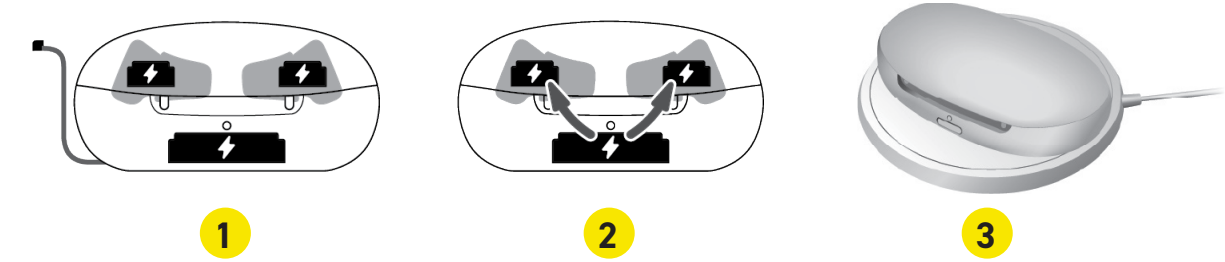


Always keep your hearing aids in the charger when not in use.

YOUR CHARGER

Automatically turns your hearing aids off when inserted.
Automatically turns your hearing aids on when removed.

- 1 Can be plugged in to charge hearing aids and charger
- 2 Has an internal battery that can provide 4 hearing aid charges on the go
- 3 Can charge hearing aids and charger wirelessly when charging case is placed on a Qi charging pad.



- 1 Charging contacts
- 2 LED charging status for left hearing aid
- 3 LED charging status for charger
- 4 LED status for right hearing aid

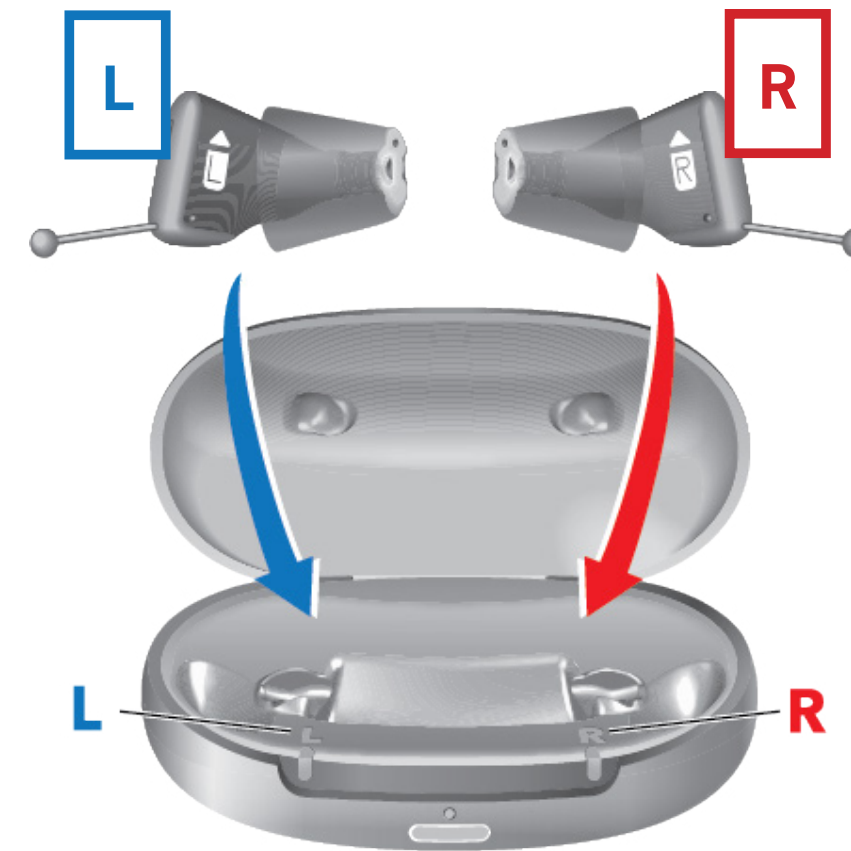


CHARGING YOUR HEARING AIDS

1. Left hearing aid goes in left charging well
2. Right hearing aid goes in right charging well
3. Close the lid to charge
 - ✓ A full charge takes about 4 hours
 - ✓ 30 minutes in the charger will add 6 hours of runtime

Tips

- ✓ Remove one hearing aid and place it in the charger before removing the other hearing aid.
- ✓ Make sure the charging contacts of hearing aids are aligned with charger contacts and they connect securely.
- ✓ Charge nightly.
- ✓ **Clean the charging contacts on both your hearing aids and the charger daily with a soft dry cloth to remove debris to ensure best charging.**

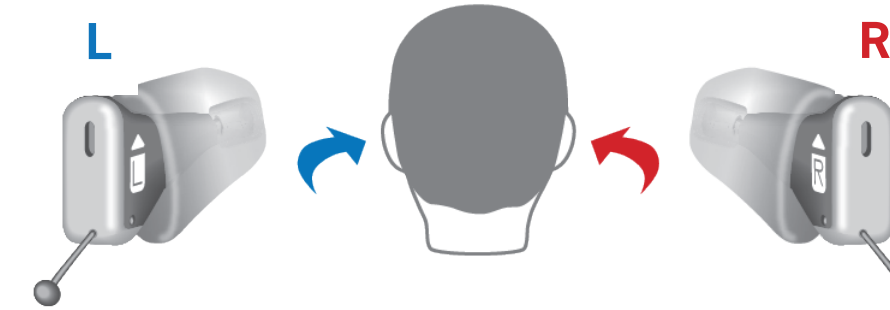


WEARING YOUR HEARING AIDS

Remove From Charger

Use your left hand to remove your left hearing aid from the charger, and your right hand to remove your right hearing aid from the charger.

A start-up melody plays during the insertion process.



Inserting

1. Hold the hearing aid between your thumb and forefinger with the removal cord towards the bottom and the L and R arrows pointing up.
2. Carefully push the hearing aid into the ear canal.
3. Twist it slightly until it sits well in the ear.
4. Open and close your mouth to release air accumulation.

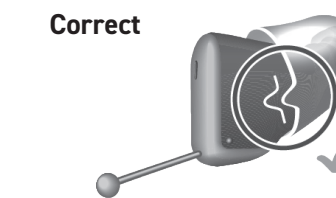


Removing

1. Push lightly on the back of your ear to loosen the hearing aid.
2. Grasp the removal cord and pull gently towards the back of your head.
3. Clean off the charging contact and place it into the appropriate charger side with removal cord at the bottom.
4. Make sure it connects to charging contact and the green. LED blinks several times.
5. Close the lid for safe keeping.

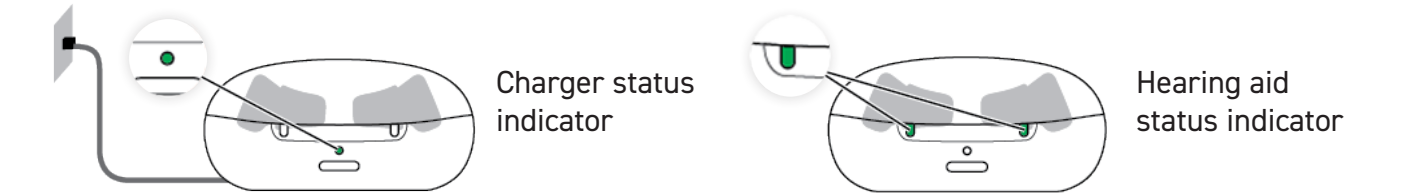
Tip

- ✓ If you use a sleeve make sure the tab on the sleeve lines up with the mark of the hearing aid before you insert into your ear.



CHARGING STATUS

The hearing aid charging status is only displayed immediately after putting the hearing aids in the charger, when you briefly press the button, or when you open the lid. The front LED indicates the charging status of the charger and its internal battery. The LED next to a hearing aid indicates the charging status of the hearing aid.



LED status when charger is charging

- Pulsing Green
Internal battery is being charged.
- Solid Green
Charger is fully charged.
- LED is off (wireless charging)
Charger is fully charged.
- Pulsing Orange.
Cooling phase. Charging is resumed when the device has cooled down. Please refer to section "Troubleshooting".
- Blinking Red
Charger error. Please refer to section "Troubleshooting".

LED hearing aid status

- Pulsing Green
Hearing aid is being charged.
- Solid Green
Hearing aid is fully charged.
- LED is off
No hearing aid is in the charger, hearing aid is not placed correctly, or charger is off.
- Pulsing Orange.
Cooling phase. Charging is resumed when the device has cooled down. Please refer to section "Troubleshooting".
- Blinking Red
Hearing aid error. Please refer to section "Troubleshooting".

Charger LED status when mobile

- Green
Internal battery has enough capacity to fully charge 2 hearing aids.
- Orange
Internal battery does NOT have enough capacity to fully charge 2 hearing aids.
- Blinking Orange
Internal charger battery depleted. Charging of hearing aids is not possible.
- LED is off
Charger is off - Press & hold the button for 5 seconds to turn on the charger. Charger needs to be charged.