

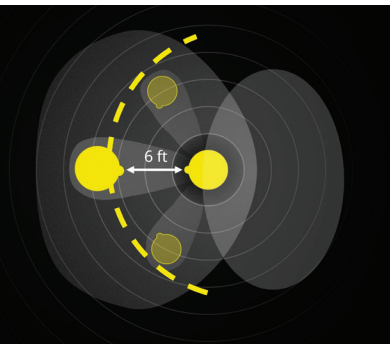
REXTON — WHAT'S NEW

NEW REXTON REACH PLATFORM

Reach delivers Multi-Voice Focus technology which allows your members to hear multiple people, even in a noisy environment. Multi-Voice Focus technology has been under development for more than a decade.

1. Detects and tracks **multiple voices** in 180° — **1,000 times per second**
2. Activates new types of beams that **locate speakers and follow them** as they move
3. Separates **target speech from background noise**

MULTI-VOICE FOCUS TECHNOLOGY



KEY FEATURES

VOICE STABILIZER

The latest Voice Stabilizer controls the compression to ensure all voices within the focus beam are amplified in the best linear ways when the sound gets too loud. It allows for more aggressive compression of the noise and more linear processing of speech to ensure a strong contrast between speech and noise. Benefit: voices remain untouched while surrounding noise is managed.

CONNECTIVITY

Rexton Reach provides seamless connectivity with compatible iOS and Android ASHA phones. With Rexton accessories, members can also connect to their TV and other audio devices.

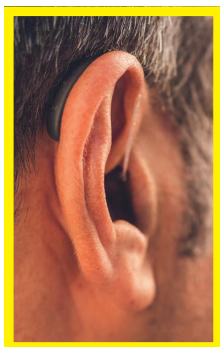
SOUNDPRO 3.0

SoundPro 3.0 automatically steers all sound processing features, including the new Multi-Voice Focus inputs, based on the analysis of the acoustic scene. When changing the strategy to Natural Focus or Speech Focus, the recommended balance of features is modified. Balanced Focus is recommended for enhanced automatic performance.

LIFEPROOF™

Rexton hearing aids are IP68 rated. They are built using robust components and are tested extensively to ensure they can endure harsh environments and you can rely on them in everyday challenges.

AVAILABLE COLORS



Black



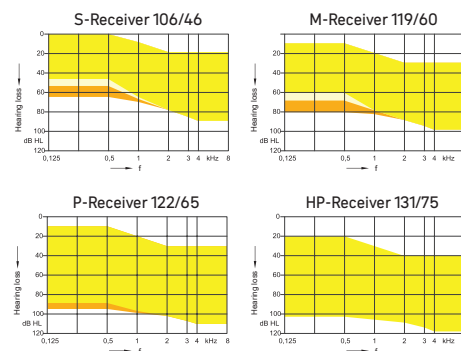
Rose Gold



Dark Champagne



Sandy Brown



MEMBER BENEFITS

- Ideal for both first time and experienced users with mild to severe hearing loss
- Discreet design with new housing update
- Rechargeable for full day use up to 39 hours (or 34 hours with 5 hours of streaming)
- 4-hour standard charge time or 30-min fast charge
- Travel Charger provides 3 charges on the go
- Live remote fitting sessions via Connexx for member convenience and satisfaction
- NEW easier-to-use Rocker Switch
- Direct audio streaming from compatible Apple® and Android™ devices
- Compatible with Rexton App and Rexton Assist
- Water resistant, IP68 and ATEX certified
- Equipped with telecoil
- Available in 4 colors

REXTON

REACH R-LI T

Performance Level	80
Battery	Lithium-ion battery
Charge Time	4 Hours
Wearing Time	up to 39 hours (no streaming) up to 34 hours (w/5 hours streaming)
FOG in dB	46/60/65/75
Accessories	Travel Charger
	Charging+ Station
	TV Sound
	Smart Mic
	Smart Key
App	Rexton App
EarWear 3.0	Domes & Sleeves

Features	Soundpro 3.0	Directionality
	Multi-Voice Focus	Noise Management
	Four focus streams	Wind Noise Reduction
	Voice Stabilizer	Bandwidth Extension
	Multi Track Processing	Bandwidth Compression
	Speech Preservation Technology	Feedback Preventer
	My Voice 2.0	Music Enhancer (3 programs)
	AutoEcho Reducer	Automatic Acclimatization
	Motion Sensor	T-Coil
	Direct Streaming	XPhone
	BT LE Audio Ready	IP 68 Rated
	Made for iPhone	ATEX Certified
	Android ASHA (11 or higher)	Rexton Assist
	Handsfree (iPhone 11 or higher)	Mask/Speech Boost
	Call/Tap Control (iPhone 11 or higher)	Directional Hearing
	AutoVolume	Remote Services

CHARGERS & ACCESSORIES



1555205
Connexx Travel Charger
Included
Provides 3 full charges
without plugging in.



1531504
Connexx Charging+ Station
Optional
Charges, dries and
UV sanitizes.



1430845
TV Sound
Optional
Allows for direct streaming
stereo sound from your TV.



1230854
Smart Mic
Optional
Remote microphone that
allows for streaming from
almost any Bluetooth-enabled
phone. May also be used
as a remote control.



1128703
Smart Key
Optional
Remote control to
easily and quickly
adjust volume
and programs.

Scan to learn more about the
NEW Rexton Reach



RELY ON
LIFEPROOF
REXTON

REXTON